

# Shopping Center Overtuinen Zuidhorn






ER 1-1

## Reference ER 1

### PROJECT DATA

Year:	-
Building Owner:	Bouwgroep Dijkstra Draisma, Zuidhorn
Designers:	I'M architecten, Deventer
Landscape designer:	-
Roof area:	1,300 m <sup>2</sup>
Green roof type:	Economy Roof
Implementation:	Frisia Bergum, Bergum
Details at:	<a href="http://www.optigreen.com">www.optigreen.com</a>

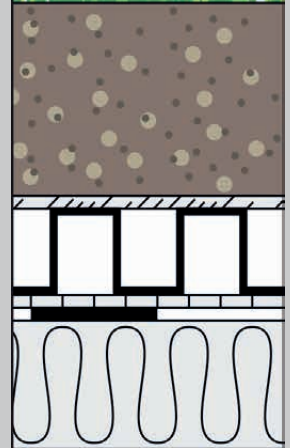
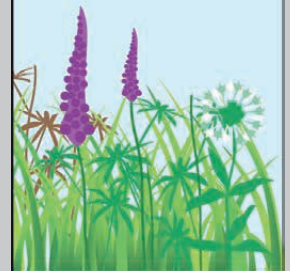
### CHARACTERISTICS

-  Particularly affordable roof greening
-  Low maintenance requirements
-  Comparatively low biodiversity



Optigrün international AG  
 Am Birkenstock 15 - 19  
 72505 Krauchenwies - Germany  
 Phone: +49 (0) 7576 - 7720  
 E-mail: [info@optigruen.de](mailto:info@optigruen.de)  
[www.optigruen.com](http://www.optigruen.com)

### System Solution



ER 1-2



ER 1-3