

Oversum - Winterberg

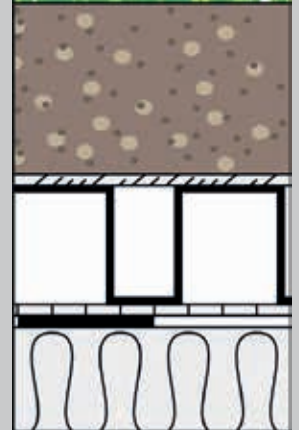


NR 1-1



Optigrün international AG
Am Birkenstock 15 - 19
72505 Krauchenwies - Germany
Phone: +49 (0) 7576 - 7720
E-mail: info@optigruen.de
www.optigruen.com

System Solution



Reference NR 1

PROJECT DATA

Year:	2012
Building Owner:	SAB AG Friedrichshafen
Designers:	form A, Cologne
Landscape designer:	Prechler Landschaftsarchitektur, Düsseldorf
Roof area:	ca. 4,000 m ²
Green roof type:	Nature Roof
Implementation:	Pennekamp & Bisping, Harsewinkel
Details at:	www.optigruen.com

CHARACTERISTICS

- ✔ High biodiversity of flora and fauna
- ✔ Ecologically valuable roof greening
- ✔ Habitat for wild bees and butterflies, among others
- ✔ Colorful and long-lasting blooming effect
- ✔ Use of recycled plastic materials
- ✔ Extensive and single-layer intensive



NR 1-2



NR 1-3



NR 1-4